

MYD-YT507H SDcard to burn EMMC Operation Guide



File status: <input type="checkbox"/> Draft <input checked="" type="checkbox"/> Release	FILE ID :	MYIR-MYD-YT507H-SW-RN-EN-2022033001
	VERSION :	V1.0 (Doc)
	AUTHOR :	licy.li
	CREATED :	2022-03-30
	UPDATED :	2022-04-30

CONTENT

MYD-YT507H SDcard to burn EMMC Operation Guide.....	- 1 -
CONTENT	- 2 -
1. Software introduction.....	- 3 -
2. Get software	- 4 -
2.1. Perform installation on APST	- 4 -
2.2. Obtained from the tools folder	- 4 -
3. Understanding software functions	- 5 -
3.1. Image button	- 5 -
3.2. "work Type"	- 5 -
3.3. Equipment list.....	- 6 -
3.4. Burn button.....	- 6 -
3.5. Restore button.....	- 6 -
3.6. Clean button.....	- 7 -
3.7. Exit button.....	- 7 -
3.8. Prompt information list.....	- 7 -
4. The operation of burning a write card	- 8 -
5. Restore the operation of the card.....	- 12 -
Appendix A.....	- 13 -

1. Software introduction

The PhoenixCard software is used to write the firmware to be produced to the SD card through the SD card reader. Users can choose different modes to write the SD card into mass production mode or start mode. After the writing is completed, users can use the written SD card to start the device in mass production or SD card.

The PhoenixCard software UI interface is as follows:

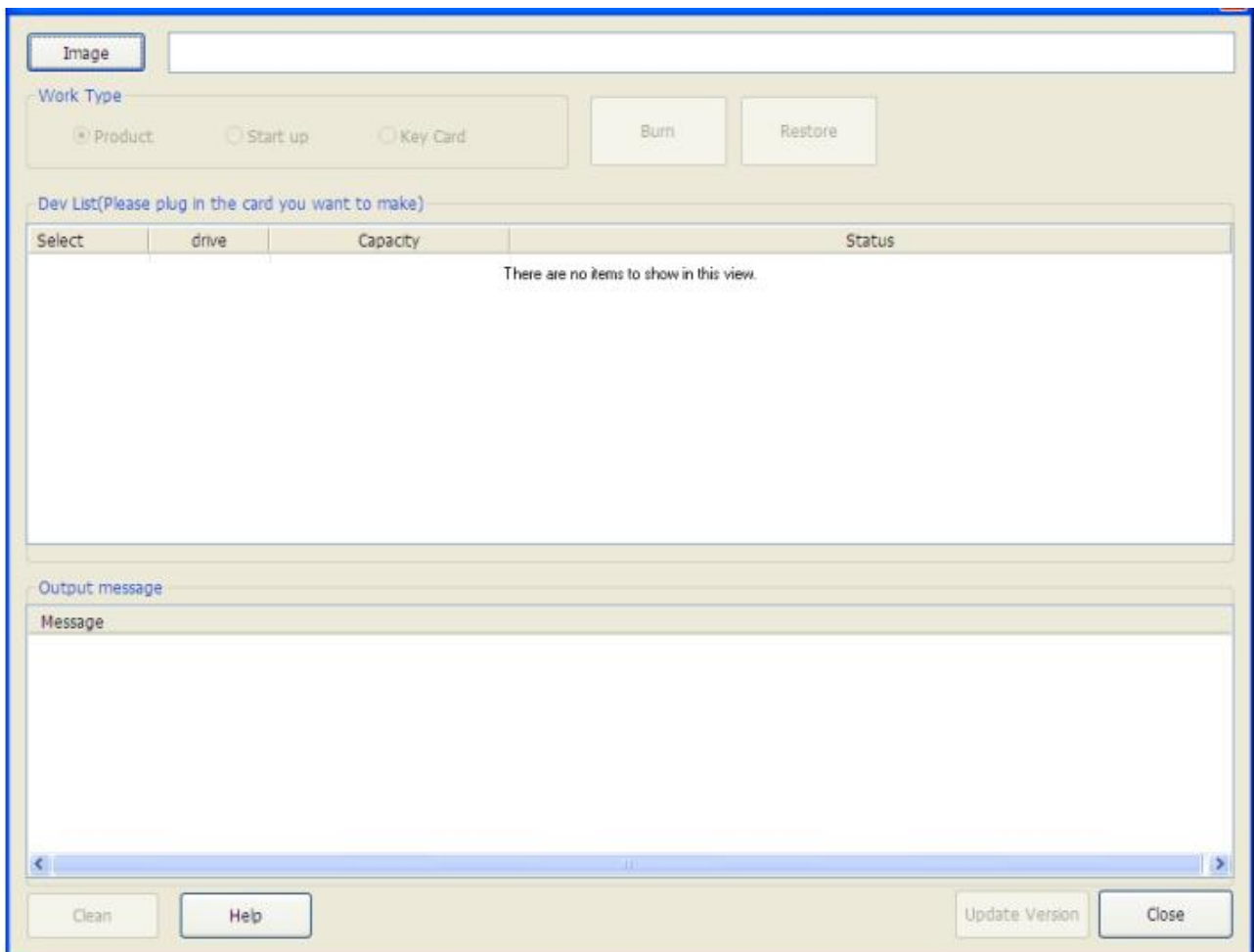


Figure 1-1. Software interface

2. Get software

There are two startup options for this burn software acquisition

2.1. Perform installation on APST

This method also requires the installation of full blog development tool set APST, which can be used only with full Blog authorization.

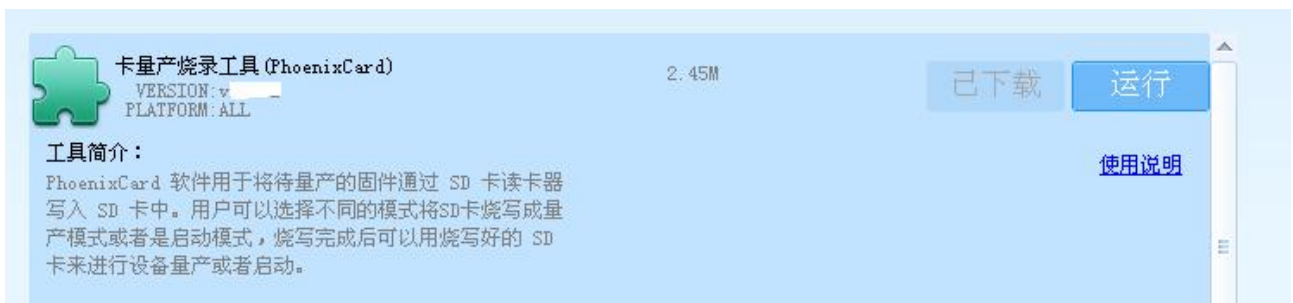


Figure 2-1. Installation on the APST

2.2. Obtained from the tools folder

Decompress the package in the 03_tools folder to obtain it.

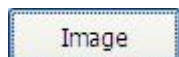
luaBase.dll	136 KB	应用程序扩展	2012-9-15 11:03
luasocket.dll	24 KB	应用程序扩展	2012-9-18 18:44
ParserManager.dll	81 KB	应用程序扩展	2015-12-1 11:22
PhoenixCard.exe	1,742 KB	应用程序	2015-12-1 17:03
PhoenixCard.lan	2 KB	LAN 文件	2015-11-30 16:35
PhoenixCard.pdb	14,091 KB	Program Debug D...	2015-12-1 17:03
PhoenixCard.dll	200 KB	应用程序扩展	2015-12-1 16:00

Figure 2-2. PhoenixCard software

3. Understanding software functions

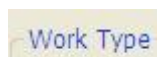
Understand the software function options, can be used to make SD cards more convenient.

3.1. Image button



Click the button to display the .img file selection dialog box, and you can select the Image file to burn.

3.2. "work Type"



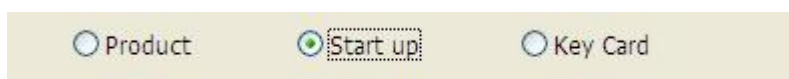
Here are three types of production cards (Product, Start up, Key Card).



Select the card production burn for mass production of the SD card.



Select "card start" burn for the start of the SD card.



Select the "Key Card" for the production of the burning serial number tool for the SD card.

Product
 Start up
 Key Card

3.3. Equipment list

Dev List(Please plug in the card you want to make)

Select	drive	Capacity	Status
<input checked="" type="checkbox"/> 1	L	15278M	
<input checked="" type="checkbox"/> 2	M	7496M	
<input checked="" type="checkbox"/> 3	P	15278M	

The equipment list will automatically insert SD card mobile storage equipment, all the enumeration to the list, for the user to choose writing. Users only need to write the corresponding letter on the card you can check. (suggest not to burn the card or U disk please pull out).

Note: this software can also write to multiple SD Card .

3.4. Burn button



Mouse click the button to start the card's burning, burning process do not do other operations. (Please backup the important data on the card before operation)

Note: The data on the card will be cleared. Please back up the important data on the card before operation

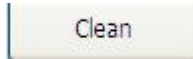
3.5. Restore button



Mouse click the button to restore the card format for ordinary card.

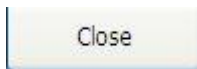
Note: Generally not used, but the data on the card will be cleared, please back up the important data on the card before operation.

3.6. Clean button



Click the button to clear the information in the information list.

3.7. Exit button



Click the button to exit the software.

3.8. Prompt information list



Tips information during the burn card.

4. The operation of burning a write card

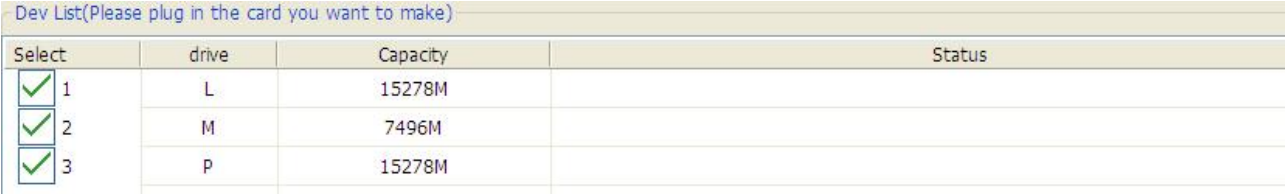
The steps are as follows:

Step 1: Run PhoenixCard

Step 2: Click the "image" button to select the image file to be updated.

Step 3: Insert the card reader with SD card

Step 4: Select the drive letter corresponding to the card to be burned in the list



Dev List(Please plug in the card you want to make)			
Select	drive	Capacity	Status
<input checked="" type="checkbox"/>	L	15278M	
<input checked="" type="checkbox"/>	M	7496M	
<input checked="" type="checkbox"/>	P	15278M	

Figure 4-1. Select the drive letter to be flushed

Step 5: Select the type of card you want to make

Select the work type



Product
 Start up
 Key Card

Figure 4-2. Select a production type

Step 6: Click the "burn" button



Burn message will be displayed in the middle message list

The typical interface information is as follows:

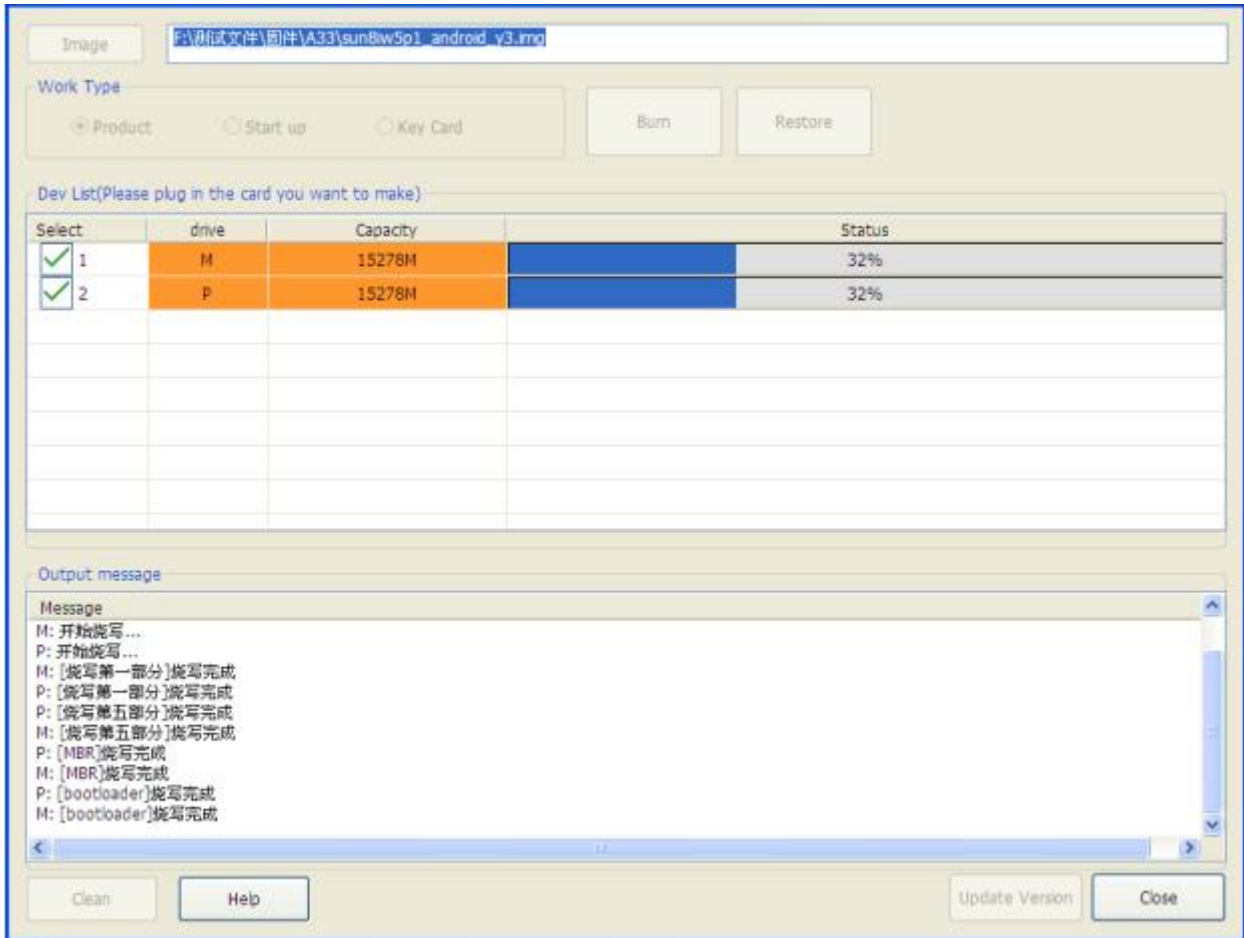


Figure 4-3. Burn process

The following message is displayed when the burn is complete.

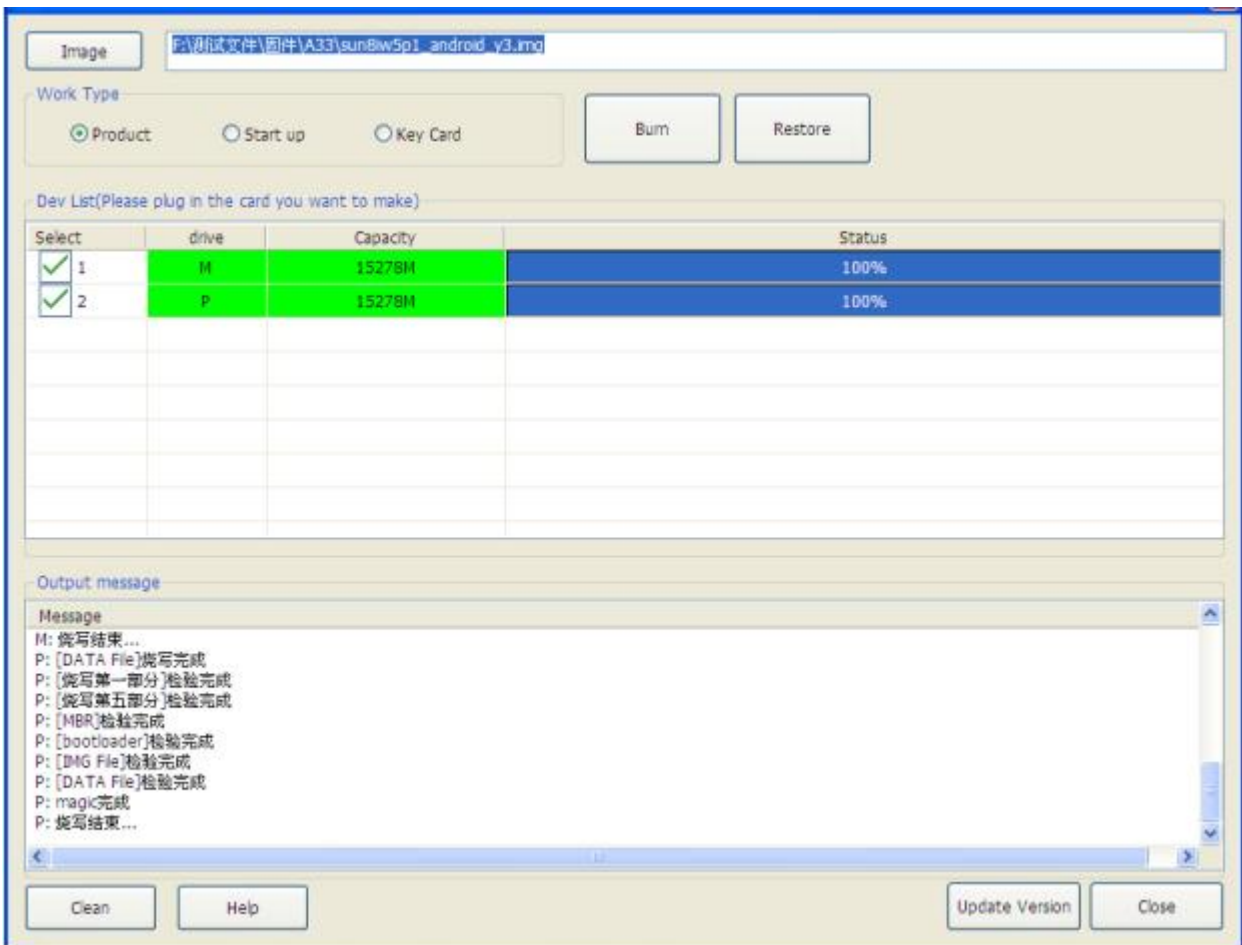


Figure 4-4. Burn completed

Check the burn procedure if any of the following errors occur.

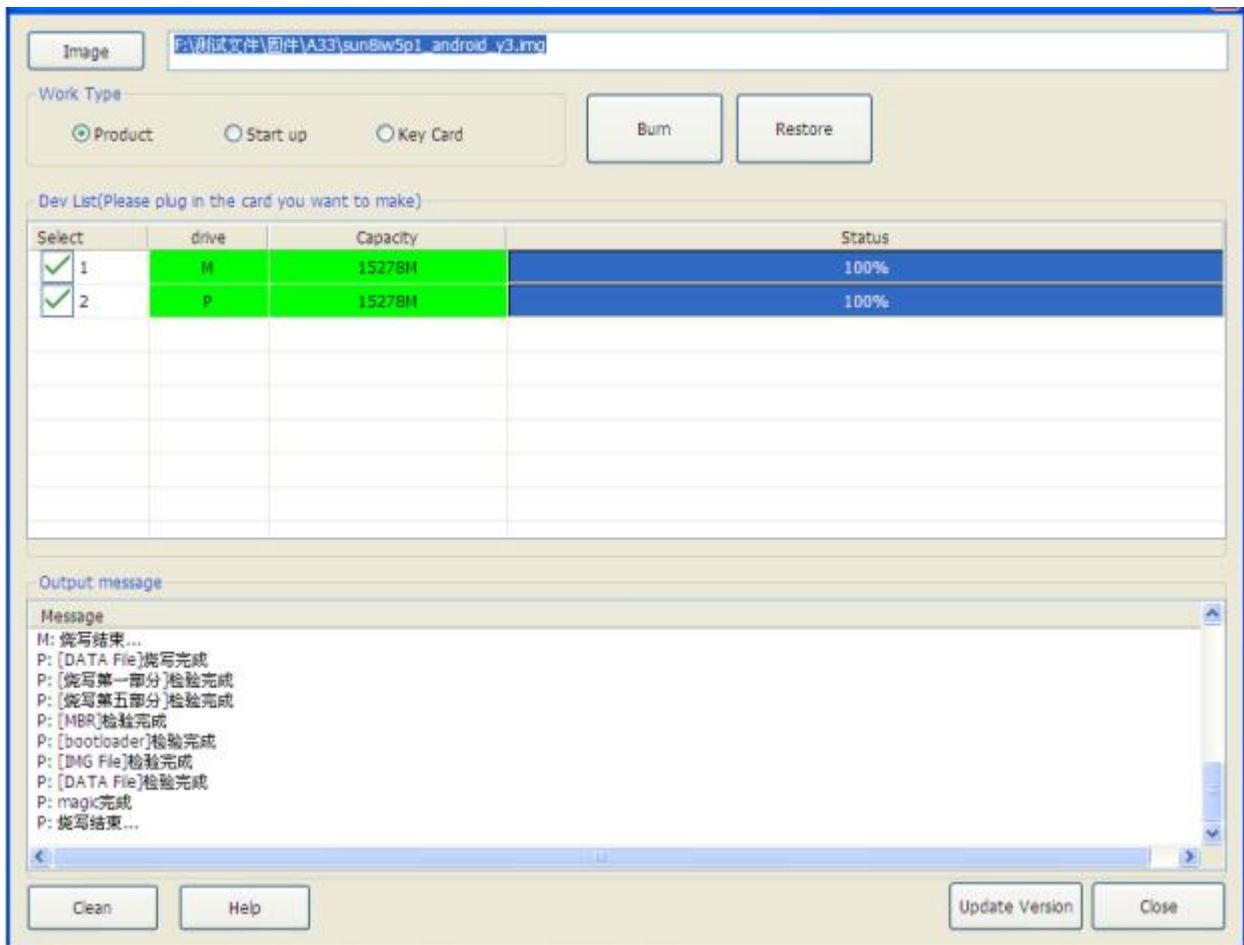


Figure 4-5. Write failure

Matters needing attention:

A . Clicking close will prompt you before the card creation operation is complete

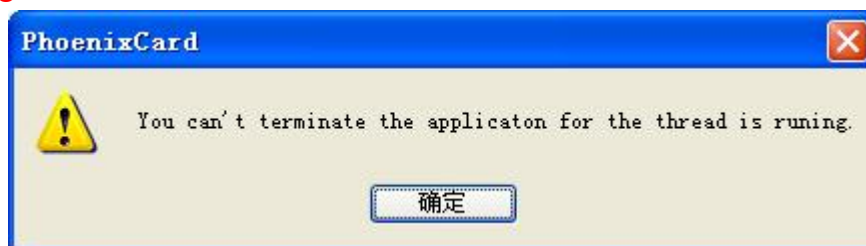


Figure 4-6. Prompt message

B . In the process of writing, the operation of inserting and removing cards will directly cause the failure of writing

5. Restore the operation of the card

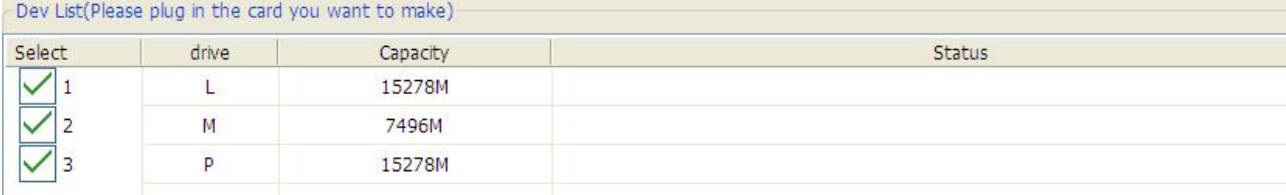
To restore the card to its original appearance, follow the following steps.

Step 1: Run PhoenixCard

Step 2: Click the "image" button to select the Image file.

Step 3: Insert the card reader with SD card

Step 4: Select the drive letter corresponding to the card to be burned in the list



Select	drive	Capacity	Status
<input checked="" type="checkbox"/>	L	15278M	
<input checked="" type="checkbox"/>	M	7496M	
<input checked="" type="checkbox"/>	P	15278M	

Figure 5-1. Identifying the drive letter

Step 5: Click the "Restore" button to restore the formatting operation and wait for the completion.

Step 6: Pull out the card when finished.

Appendix A

Warranty & Technical Support Services

MYIR Electronics Limited is a global provider of ARM hardware and software tools, design solutions for embedded applications. We support our customers in a wide range of services to accelerate your time to market.

MYIR is an ARM Connected Community Member and work closely with ARM and many semiconductor vendors. We sell products ranging from board level products such as development boards, single board computers and CPU modules to help with your evaluation, prototype, and system integration or creating your own applications. Our products are used widely in industrial control, medical devices, consumer electronic, telecommunication systems, Human Machine Interface (HMI) and more other embedded applications. MYIR has an experienced team and provides custom design services based on ARM processors to help customers make your idea a reality.

The contents below introduce to customers the warranty and technical support services provided by MYIR as well as the matters needing attention in using MYIR' s products.

Service Guarantee

MYIR regards the product quality as the life of an enterprise. We strictly check and control the core board design, the procurement of components, production control, product testing, packaging, shipping and other aspects and strive to provide products with best quality to customers. We believe that only quality products and excellent services can ensure the long-term cooperation and mutual benefit.

Price

MYIR insists on providing customers with the most valuable products. We do not pursue excess profits which we think only for short-time cooperation. Instead, we hope to establish

long-term cooperation and win-win business with customers. So we will offer reasonable prices in the hope of making the business greater with the customers together hand in hand.

Delivery Time

MYIR will always keep a certain stock for its regular products. If your order quantity is less than the amount of inventory, the delivery time would be within three days; if your order quantity is greater than the number of inventory, the delivery time would be always four to six weeks. If for any urgent delivery, we can negotiate with customer and try to supply the goods in advance.

Technical Support

MYIR has a professional technical support team. Customer can contact us by email (support@myirtech.com), we will try to reply you within 48 hours. For mass production and customized products, we will specify person to follow the case and ensure the smooth production.

After-sale Service

MYIR offers one year free technical support and after-sales maintenance service from the purchase date. The service covers:

Technical support service

MYIR offers technical support for the hardware and software materials which have provided to customers:

- To help customers compile and run the source code we offer;
- To help customers solve problems occurred during operations if users follow the user manual documents;
- To judge whether the failure exists;
- To provide free software upgrading service.

However, the following situations are not included in the scope of our free technical support service:

- Hardware or software problems occurred during customers' own development;
- Problems occurred when customers compile or run the OS which is tailored by themselves;
- Problems occurred during customers' own applications development;
- Problems occurred during the modification of MYIR's software source code.

After-sales maintenance service

The products except LCD, which are not used properly, will take the twelve months free maintenance service since the purchase date. But following situations are not included in the scope of our free maintenance service:

- The warranty period is expired;
- The customer cannot provide proof-of-purchase or the product has no serial number;
- The customer has not followed the instruction of the manual which has caused the damage the product;
- Due to the natural disasters (unexpected matters), or natural attrition of the components, or unexpected matters leads the defects of appearance/function;
- Due to the power supply, bump, leaking of the roof, pets, moist, impurities into the boards, all those reasons which have caused the damage of the products or defects of appearance;
- Due to unauthorized weld or dismantle parts or repair the products which has caused the damage of the products or defects of appearance;
- Due to unauthorized installation of the software, system or incorrect configuration or computer virus which has caused the damage of products.

Warm tips

1. MYIR does not supply maintenance service to LCD. We suggest the customer first check the LCD when receiving the goods. In case the LCD cannot run or no display, customer should contact MYIR within 7 business days from the moment get the goods.
2. Please do not use finger nails or hard sharp object to touch the surface of the LCD.

3. MYIR suggests user purchasing a piece of special wiper to wipe the LCD after long time use, please avoid clean the surface with fingers or hands to leave fingerprint.
4. Do not clean the surface of the screen with chemicals.
5. Please read through the product user manual before you using MYIR' s products.
6. For any maintenance service, customers should communicate with MYIR to confirm the issue first. MYIR' s support team will judge the failure to see if the goods need to be returned for repair service, we will issue you RMA number for return maintenance service after confirmation.

Maintenance period and charges

- MYIR will test the products within three days after receipt of the returned goods and inform customer the testing result. Then we will arrange shipment within one week for the repaired goods to the customer. For any special failure, we will negotiate with customers to confirm the maintenance period.
- For products within warranty period and caused by quality problem, MYIR offers free maintenance service; for products within warranty period but out of free maintenance service scope, MYIR provides maintenance service but shall charge some basic material cost; for products out of warranty period, MYIR provides maintenance service but shall charge some basic material cost and handling fee.

Shipping cost

During the warranty period, the shipping cost which delivered to MYIR should be responsible by user; MYIR will pay for the return shipping cost to users when the product is repaired. If the warranty period is expired, all the shipping cost will be responsible by users.

Products Life Cycle

MYIR will always select mainstream chips for our design, thus to ensure at least ten years continuous supply; if meeting some main chip stopping production, we will inform customers in time and assist customers with products updating and upgrading.

Value-added Services

1. MYIR provides services of driver development base on MYIR' s products, like serial port, USB, Ethernet, LCD, etc.
2. MYIR provides the services of OS porting, BSP drivers' development, API software development, etc.
3. MYIR provides other products supporting services like power adapter, LCD panel, etc.
4. ODM/OEM services.

MYIR Electronics Limited

Room 04, 6th Floor, Building No.2, Fada Road,
Yunli Intelligent Park, Bantian, Longgang District.

Support Email: support@myirtech.com

Sales Email: sales@myirtech.com

Phone: +86-755-22984836

Fax: +86-755-25532724

Website: www.myirtech.com